

# KC0600 SERIES COMMERCIAL KEY CABINETS

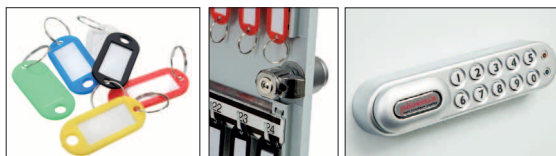
**smart**  
**LOCK** 



A series of high quality Key Cabinets ranging from 42 hook up to 600 hook units.

- **LOCKING – KC0600K** – Manufactured with a high quality cylinder lock supplied with 2 keys.  
**KC0600E** – Fitted with a high quality electronic code lock, programmable with users own 4 digit code which can easily be changed when required.  
**KC0600N** – Fitted with the NetCode 1000 lock allowing temporary access to the cabinets via the web-based NetCode Portal. NetCode is activated prior to the lock owner shipping and installing at a remote site. The NetCode Portal allows you to register and set up your account, activate your locks and generate time-sensitive codes. Using time-sensitive codes is a more secure way to grant access as the code will not work outside a designated timeslot. Generated codes can be sent by email or SMS to any email account or mobile phone.
- **SPECIAL FEATURES** – Each unit comes with adjustable hook bars and number labels to suit. The 400 and 600-hook units are double door cabinets.
- **FIXING** – The cabinets have pre-drilled fixing holes for wall mounting.
- **FINISH** – Finished in a high quality durable powder coated finish.

MODEL NUMBER	EXTERNAL DIMENSIONS H x W x D	WEIGHT	KEY HOOKS
KC0601K/E/N	350 x 270 x 80mm	4kg	42
KC0602K/E/N	450 x 300 x 80mm	6kg	64
KC0603K/E/N	550 x 380 x 80mm	7kg	100
KC0604K/E/N	550 x 380 x 140mm	11kg	200
KC0605K/E/N	550 x 380 x 205mm	14kg	300
KC0606K/E/N	550 x 730 x 140mm	20kg	400
KC0607K/E/N	550 x 730 x 205mm	28kg	600



**NEXT DAY  
DELIVERY**



**KC0600K**



**KC0600E/N**

All weights are for the product only and does not include the packaging.